

TJ1270

Compact, Multi service Platform for Access Networks



Highlights:

- Compact STM1/4/16 MSPP
- Advanced Packet Features: For Carrier Ethernet
- Supports Parallel TDM & Data networks on single
- Multi Service Delivery
- Extended Temperature Operation

Key Benefits

Compact Flexible Solution: In 1U form factor, TJ1270 provides STM16 ADM functionality with E1, E3/DS3, FE, GigE and STM1, STM4 drops. Layer 1 and Layer 2 functionality is supported on Ethernet, thus leveraging the efficiencies of statistical multiplexing, right at the edge of the network. These help the service provider to reduce costs and save on real estate while still meeting all the requirements for the network.

Advanced Packet Capabilities: The TJ1270 supports advanced features like sub 50ms protected packet rings, per service SLAs with CIR (Committed Information Rate) & PIR (Peak Information Rate) configurable in 64kbps granularity. Two rate, Three Color Marking helps in better congestion control and 8 classes of service help to segregate and manage the data traffic more efficiently. ACLs and features like broadcast storm control improve the security of the network.

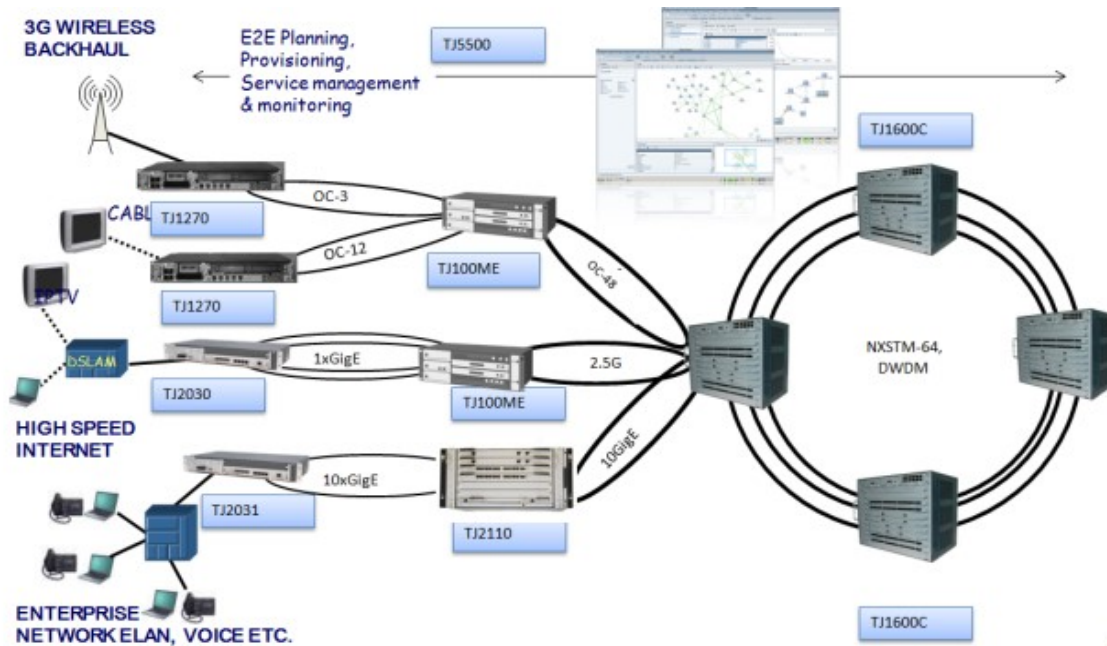
Overview

TJ1270 is an ultra-compact, high density MSPP, which packs many types and large number of interfaces in a compact 1U form factor. It can be used as a Customer Premise Equipment or as a network element in the Access Network. It can progressively scale from STM1 to STM16 (both SDH & SONET versions). In addition it supports line rate FE and GigE interfaces with Carrier Ethernet capabilities. This is suitable for Mobile backhaul, at microwave hub locations and aggregation rings for Triple Play and Enterprise services. It can be used for connectivity of E1, E3/DS3 and Ethernet interfaces. With cutting edge Carrier Ethernet features, it is ideal for packet dominated networks.

Extended Temperature Hardware: TJ1270 comes in two variants, one is a normal use standard temperature range (0 to 50 degrees), while the extended temperature variant supports -20 degrees to 70 degrees. This can be used in extreme conditions like desert or high mountain terrain without the need for weather protection or air conditioning. This is also very useful in military applications.

Integrated Multi Service Delivery: TJ1270 is part of the Future Proof Transport Solution from Tejas that ensures efficient use of transport bandwidth for provisioning of voice & data services. With a single box it can be used to build TDM networks, Carrier Ethernet over SDH networks (by carving out bandwidth from TDM aggregates), and for building a parallel pure packet network, all on the same box. This helps in easy migration from TDM based to

Applications



Technical Specifications

Cross-Connect

2.5G, 10G
LO Fully non-blocking on all options
Transmux Grooming

Aggregate Interfaces

STM4, STM16
GigE Tributary Interfaces
E1, E3/DS3, FE, GigE
STM1/STM4 Equipment Protection
Power Supply Redundancy Advanced Ethernet

Features

Provider Bridging (802.1ad)
Classification on L2 fields, DSCP Bits
Programmable Committed/Peak Information Rates
Link Aggregation (802.3ad)
Ethernet Ring Protection (G.8032)

Operations & Troubleshooting

Performance Monitoring as per G.826 and G.784
Remote Software Download
Performance statistics for Ethernet & VCGs

Management

Tejas 5500 Network Management System
Northbound SNMPv2 interface
End-to-end management across Tejas POTP family
Full Remote Management Capability
V.24/V.28 modem interface (for remote management)

Power Supply

-48 V DC nominal, -40 V to -58 V
Power consumption < 75W

Physical Dimensions

44mm (H) x 445mm (W) x 250mm (D)

Environmental

Standard Temperature : 0°C to 50°C
Extended Temperature : -20°C to 70°C
Relative Humidity: 10% to 90%, non condensing.
ETSI/EN 300386
EN 55022 Class A

*Specifications are subject to change without notice

68-72 Church Street, Suite 6
Northbridge, MA 01588
USA



Software Enabled Transformation
Copyright Tejas Networks Ltd. 2017

Plot No 25, JP Software Park
Electronic City Phase 1
Bangalore 560 100, India